

# New Legends Home



1 SOUTH ELEVATION  
A2.1 SCALE: 1/8" = 1'-0"

- 3800sf
- 4 bed, 4 bath
- Main floor master suite
- Second floor mini master
- Large bonus room
- Dedicated office space
- Vaulted ceilings throughout\
- Wrap around front porch
- 3 car garage, one large bay for oversize vehicles
- Backs to trail system
- Open space on 2 sides
- Near public and private golf courses
- 15 miles to Bridger Bowl Skiing
- Walk to work, parks, restaurants, and more
- Sought after Bozeman location

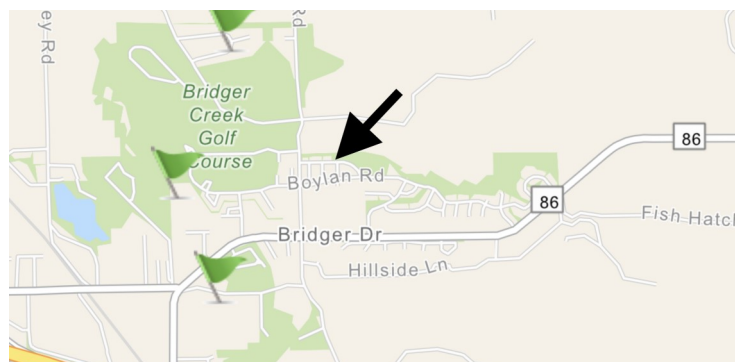
Exceptional new home in Legends Subdivision built by Cold Smoke Construction. Estimated completion August 2019.

MLS # :

Address: 1225 Pinnacle Star St, Bozeman, MT 59715

Priced at: \$1,200,000

Call Eddie today for your private showing



listed by: **Eddie Steinhauer, Broker**  
cell: (406)580-1456  
email: [eddiesteinhauer@gmail.com](mailto:eddiesteinhauer@gmail.com)  
web: [www.mccawandcompany.com](http://www.mccawandcompany.com)

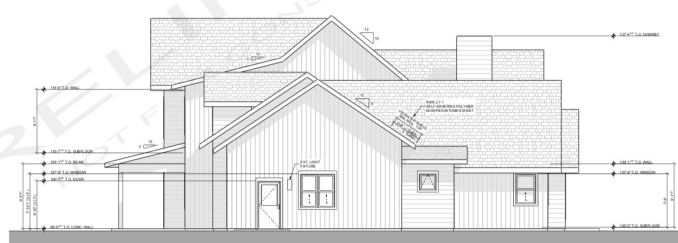


**McCaw, DeVries,  
Steinhauer & Company**  
RESIDENTIAL & COMMERCIAL REAL ESTATE

# 1225 Pinnacle Star St, Bozeman, MT



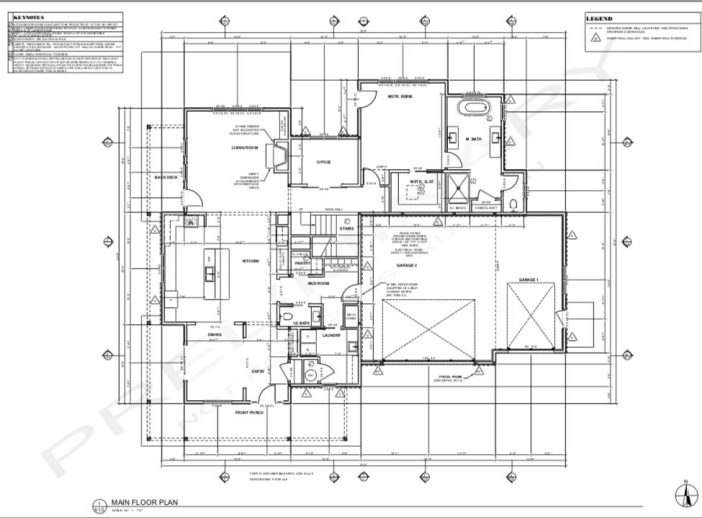
2 NORTH ELEVATION  
SCALE: 1/4" = 1'-0"



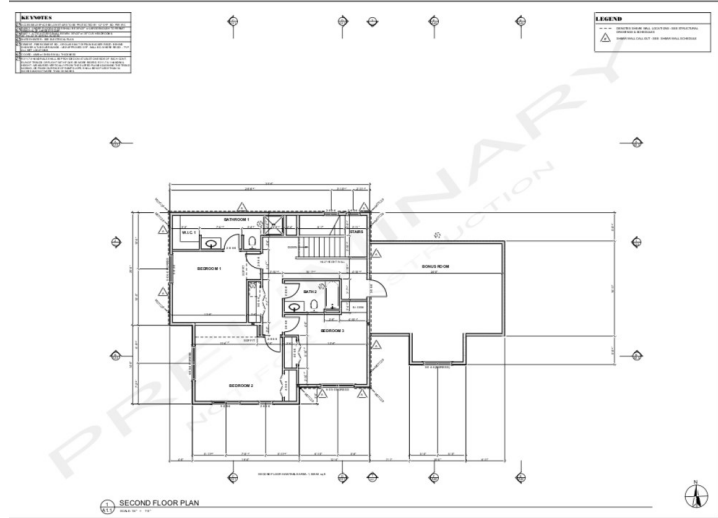
1 EAST ELEVATION  
SCALE: 1/4" = 1'-0"



3 WEST ELEVATION  
SCALE: 1/4" = 1'-0"



1 MAIN FLOOR PLAN  
SCALE: 1/4" = 1'-0"



2 SECOND FLOOR PLAN  
SCALE: 1/4" = 1'-0"

listed by: Eddie Steinhauer, Broker  
cell: (406)580-1456  
email: eddiesteinhauer@gmail.com  
web: www.mccawandcompany.com



**McCaw, DeVries,  
Steinhauer & Company**  
RESIDENTIAL & COMMERCIAL REAL ESTATE