

Bozeman Downtown Grade A Office Space for Lease

1050 East Main Street Bozeman / Energy Efficient, Fresh, Modern and Green Office Center with parking, Office with storage in the heart of downtown Bozeman. 4 Large Offices Large Reception area and large file storage area. Ready Now for 3-5Year Lease



Square Footage Total 2020
Main Floor 1390
Basement 630

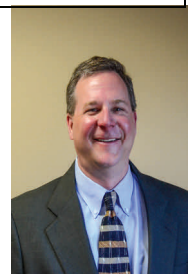
Monthly Base Rent \$ 2157.50
3-5 year lease Ready Now
NNN Charges \$ 820.00

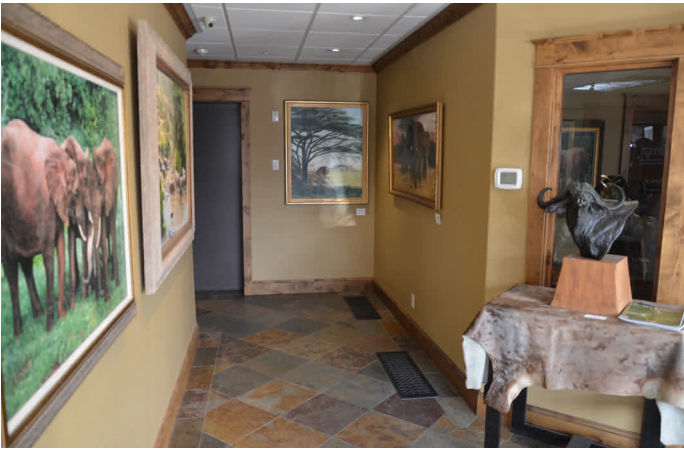
Total 2020

Monthly \$2977.50 Total



Evan McCaw
Broker
406-587-5540
406-581-2213 Cell





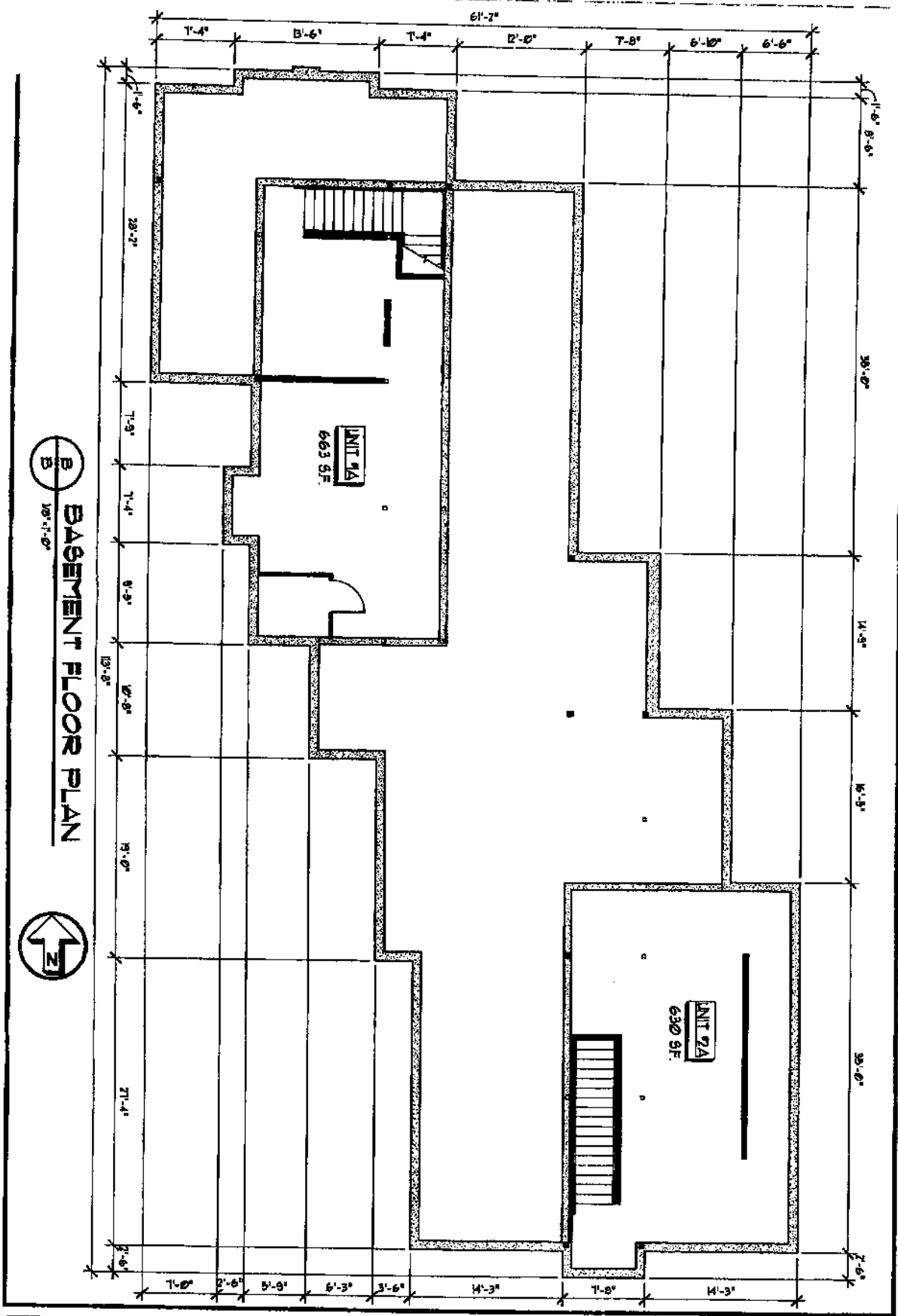
1050 East Main

Bozeman

Square Footage		Base Rent SqFT	
1390	\$	15.00	\$ 20,850.00
630	\$	8.00	\$ 5,040.00
2020			
	\$	Yearly 25,890.00	Monthly Rent \$ 2,157.50

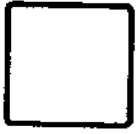
		NNN Charges	
		Yearly	Monthly
Taxes	\$	4,506.43	\$ 375.54
Insurance	\$	1,600.00	\$ 133.33
Cam / Dues	\$	3,324.00	\$ 277.00
\$ 4.67	\$	9,430.43	\$ 820.98

Total
\$ 2,978.48



B BASEMENT FLOOR PLAN

B
2-8-05



EAST MAIN PLAZA
1000 EAST MAIN ST. BOZEMAN, MT

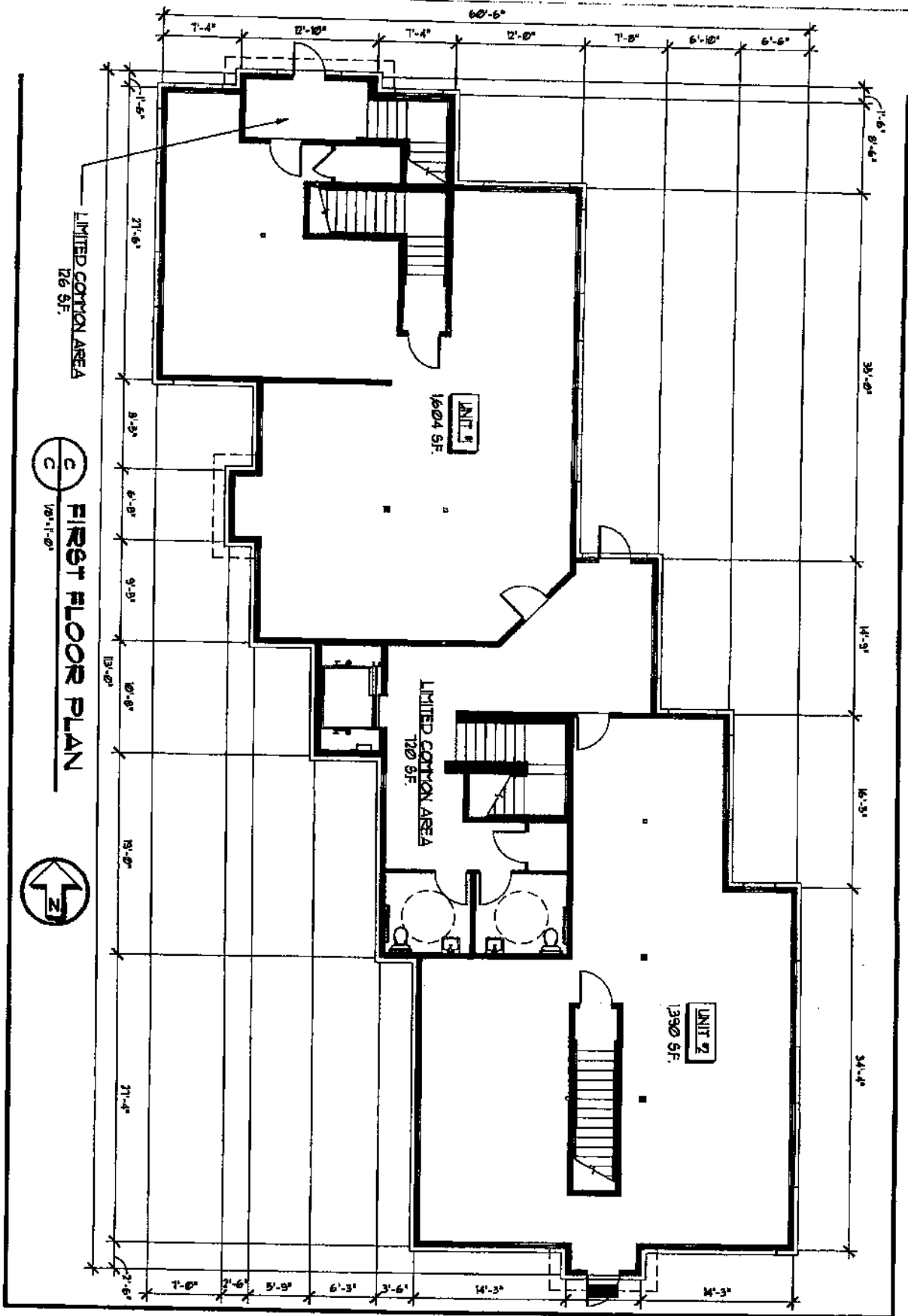
NO.	DESCRIPTION	DATE	BY

SPRINGER GROUP, P.C.
ARCHITECTS
200 SOUTH WALLACE AVENUE
BOZEMAN, MONTANA 59718
PHONE: (406) 552-2200
FAX: (406) 552-2201
www.springergroup.com



EXHIBIT B-1

2223148
Page: 3 of 7
03/30/2005 10:01A



C
2-0-08

EAST MAIN PLAZA

200 EAST MAIN ST. BOZEMAN, MT

NO.	DESCRIPTION	DATE	BY

SPRINGER GROUP, P.C.
ARCHITECTS
20 SOUTH WALLACE AVENUE
BOZEMAN, MONTANA 59717
TEL: 409-4444
FAX: 409-4444
EMAIL: springer@spg.com



EXHIBIT B-2

2223148
Page: 4 of 7
03/30/2006 10:01R